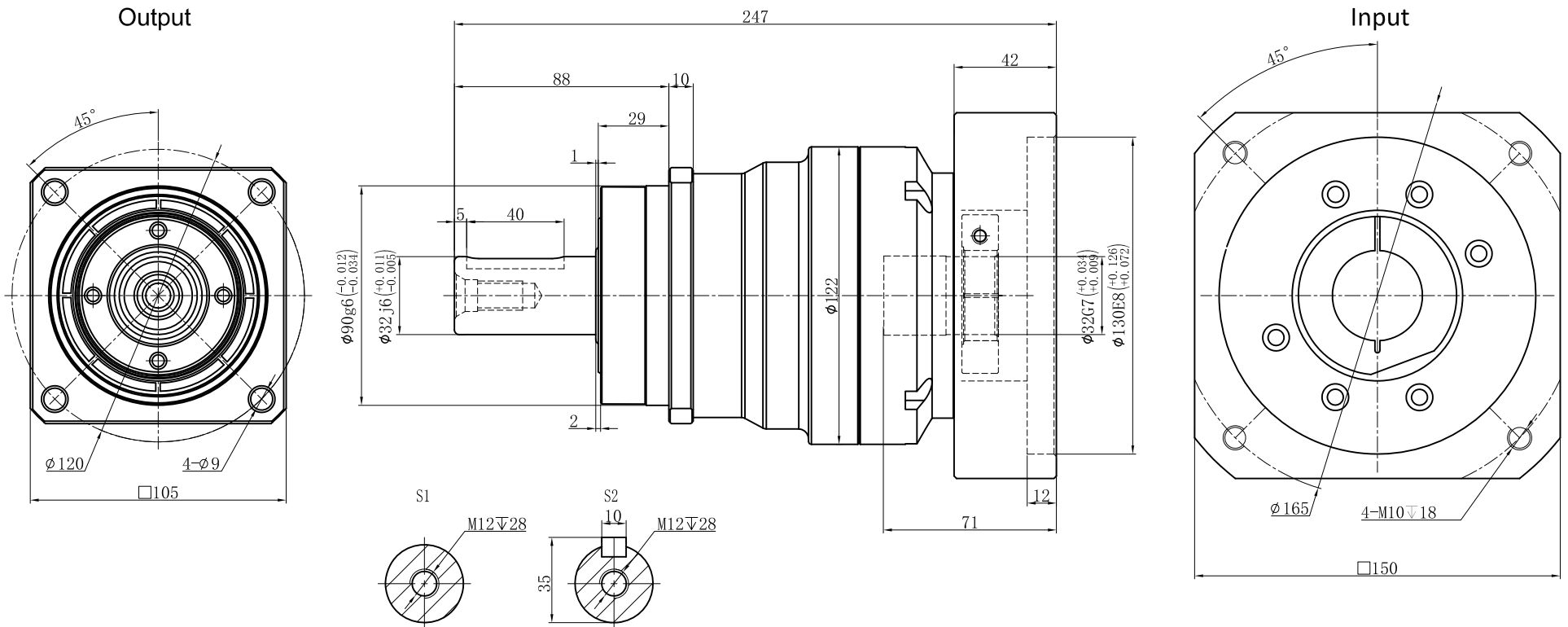


Customer name:



Transmission ratio	(<u>A</u>):1	Mass moments of inertia	(<u>B</u>)Kg.cm ²												
Rated output torque	(<u>C</u>)Nm	Max.Output torque	(<u>D</u>)Nm												
Rated input speed	4000rpm	Max input speed	8000rpm		10	2.57	235	423	Sign/Date						
Max.radial force	9200N	Max.axial force	5820N		7	2.62	300	540			8	2.58	260	468	
Efficiency	≥ 97%	Operating temperature	-20°~+90°		5	2.71	333	599			6	2.65	310	558	
Mounting position	Any	Lubrication method	Synthetic grease		4	2.74	290	522			3	3.25	210	378	
Weight ±3%	8.9Kg	Service life	20000h	Ratio	A	B	C	D		Ratio	A	B	C	D	
Standard backlash	≤ 5 arcmin	Protection class	IP65	NOTE								Precision Planetary Reducer			
Motor power		Noise level	63dB									TF100			
Motor dimensions												TF100-L1			
												Shaft Type Precision			

Above specifications are for standard reducer and may be subject to change without notice.